



Radiant Technologies, Inc.  
2835D Pan American Freeway NE  
Albuquerque, NM 87107  
Tel: 505-842-8007  
Fax: 505-842-0366  
e-mail: radiant@ferrodevices.com

9 April, 2009

From: Scott P. Chapman  
Radiant Technologies, Inc.

To: Precision NGS Systems Testers Interface Owners

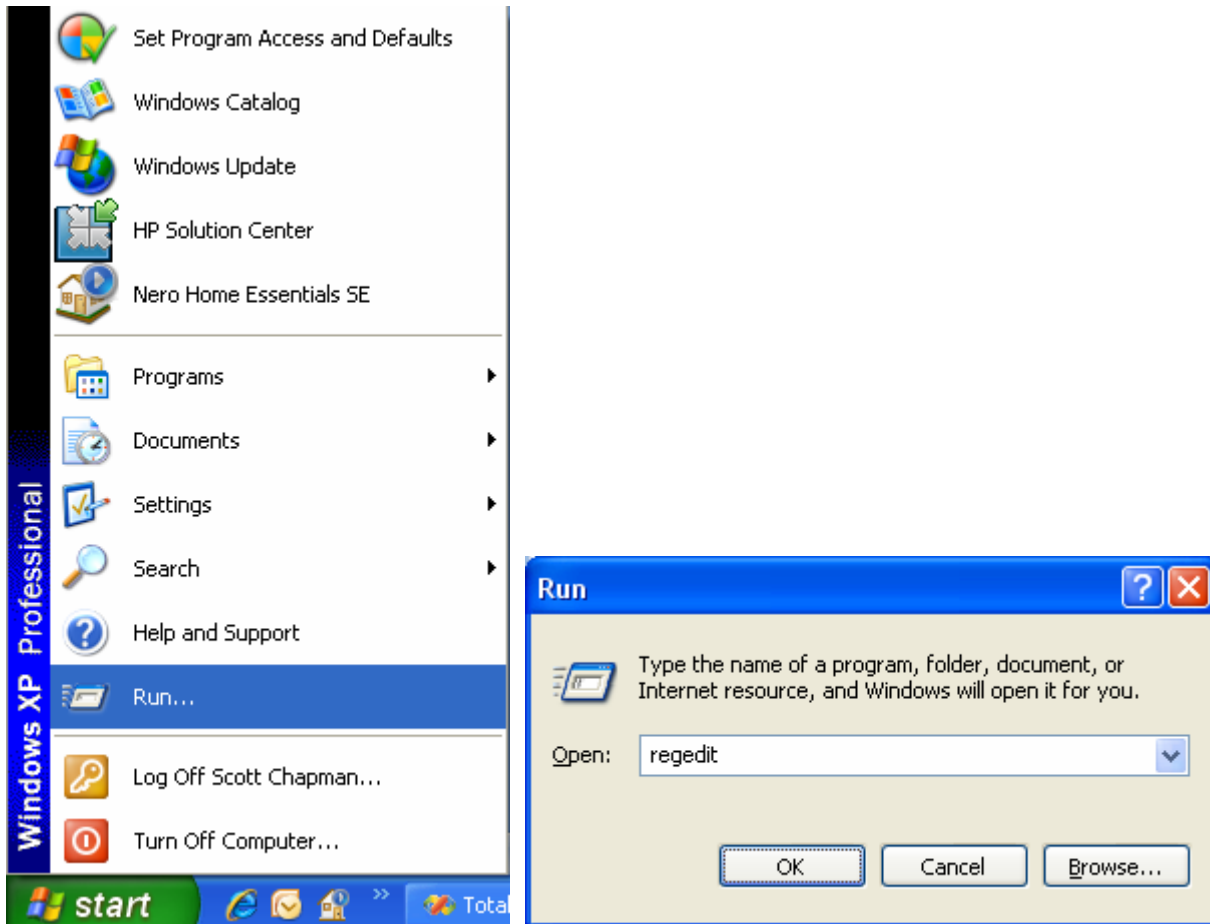
Subj: Vision Configuration for Multiple Logins

Dear Precision Tester System Owner,

This document is intended for all users of Vision 4.1.x, regardless of the model of NGS tester, who will be using the tester on a host with multiple logins. Vision installs three registry entries that apply only to the user who is logged in when Vision is installed. These are Current User entries that must be updated under each login that is to use Vision.

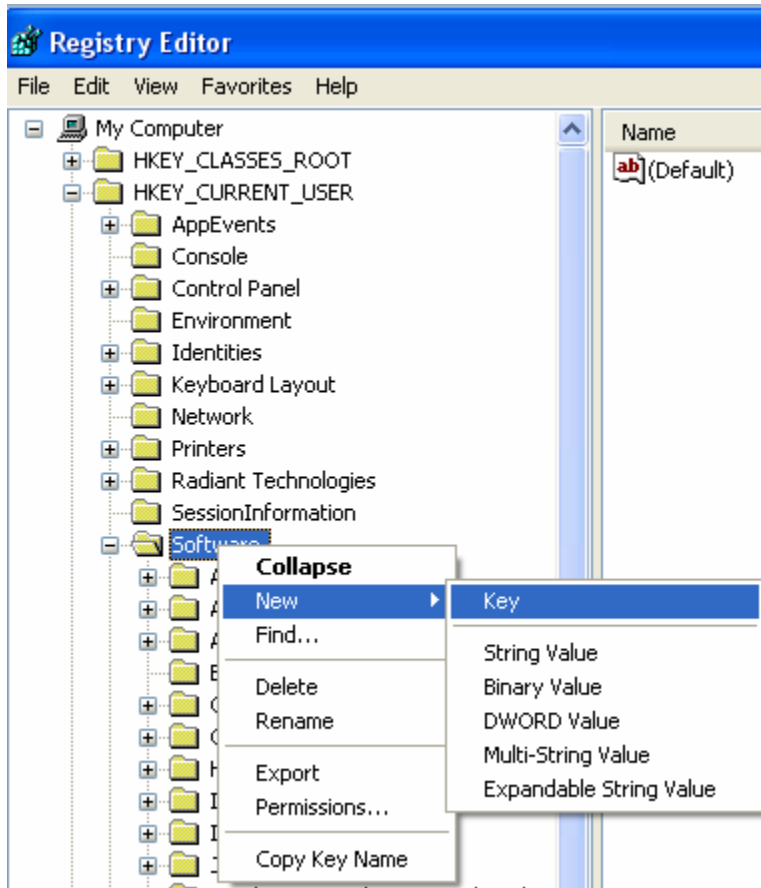
Note that Vision installs a large variety of registry entries under the Current User registry key. However, only the three entries discussed in this document are required to launch Vision and operate it properly. The other entries may or may not already exist in the registry. But these three entries will need to be added by hand under each new login.

To start to update the registry go to Start->Run and type "regedit" in the dialog that appears.



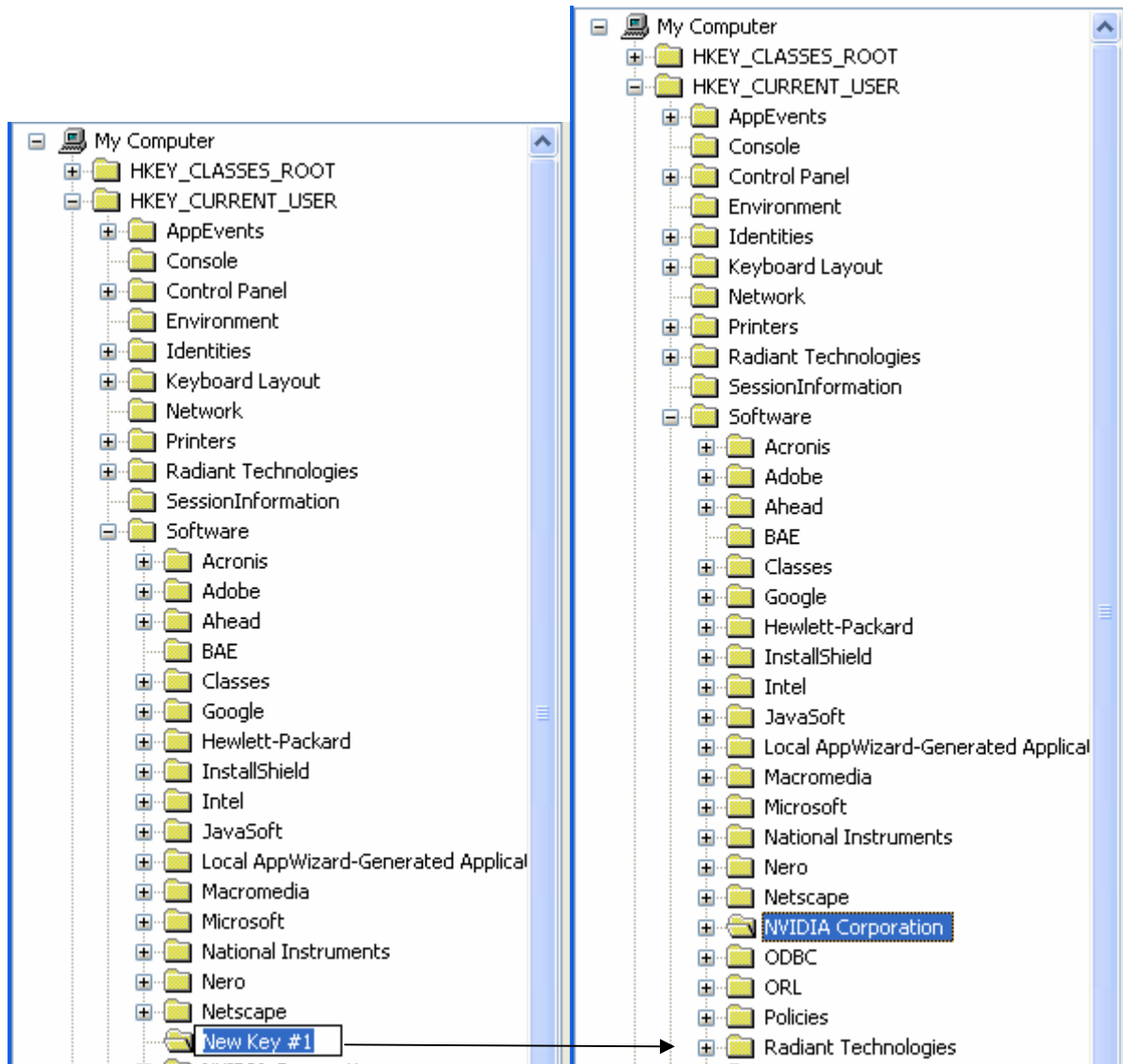
**Figure 1 – Start->Run->Regedit**

A Registry Explorer will appear that resembles the standard Windows File Explorer program. Under the “My Computer” Root, the first level of entries in the program start with the “HKEY\_...” label. The entries you will need to add will be under the HKEY\_CURRENT\_USER label key. (Folders are known as “keys” in the registry). The root path for all Vision entries will be HKEY\_CURRENT\_USER->Software->Radiant Technologies. The Software key will already exist. If the Radiant Technologies key does not exist, select the HKEY\_CURRENT\_USER->Software key, right-click and select New->Key from the popup menu.



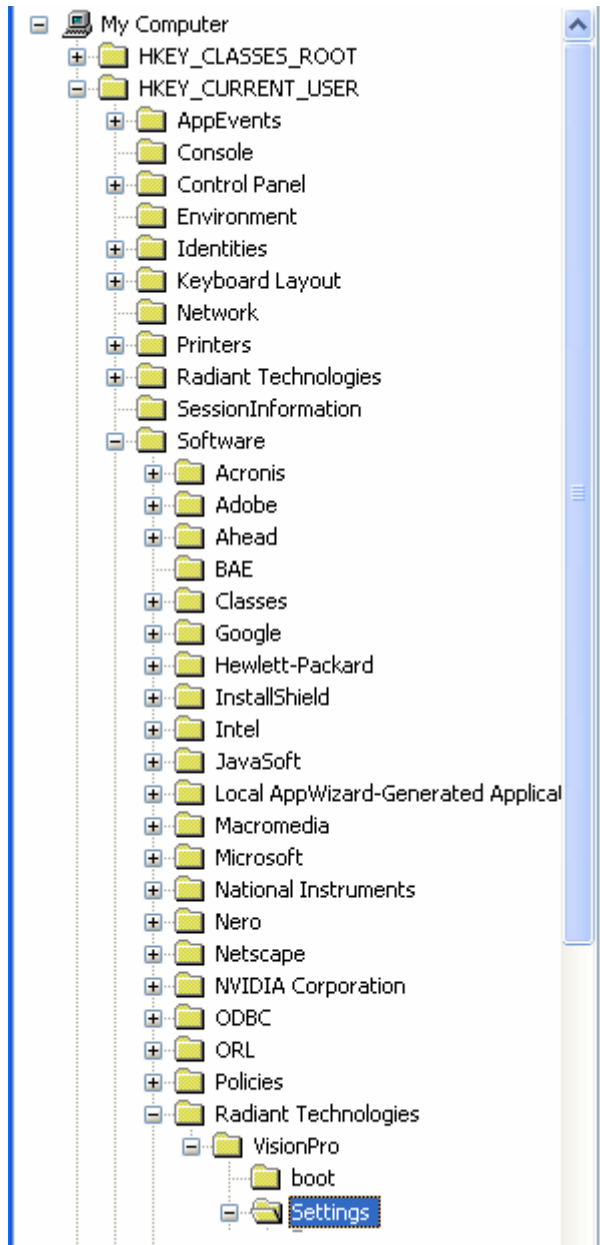
**Figure 2 – Initiate a New Key Under HKEY\_CURRENT\_USER->Software.**

The key will appear in the path and will be labeled “New Key #1”. The label will be selected for renaming. Rename the key “Radiant Technologies”.



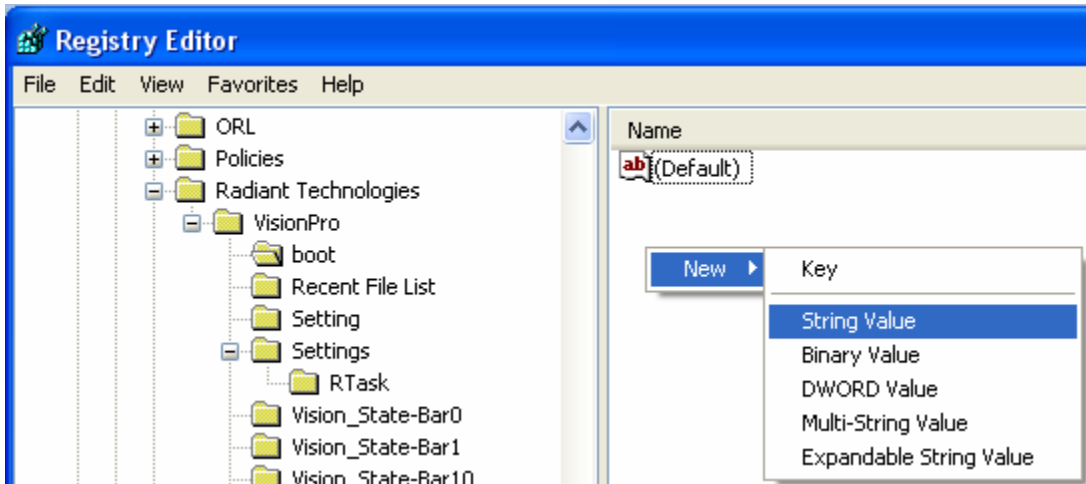
**Figure 3 – Add the HKEY\_CURRENT\_USER->Software->Radiant Technologies Key.**

If HKEY\_CURRENT\_USER->Software->Radiant Technologies already exists, the step is not necessary. In that case, there may already be several keys under HKEY\_CURRENT\_USER->Software->Radiant Technologies. If not, select the HKEY\_CURRENT\_USER->Software->Radiant Technologies key and repeat the above process to add HKEY\_CURRENT\_USER->Software->Radiant Technologies->boot and HKEY\_CURRENT\_USER->Software->Radiant Technologies->Settings. (Note that registry entries should not be case sensitive. However, I have encountered installations in which case seems to matter. Please be sure that the keys and values are entered exactly as shown in these figures.)



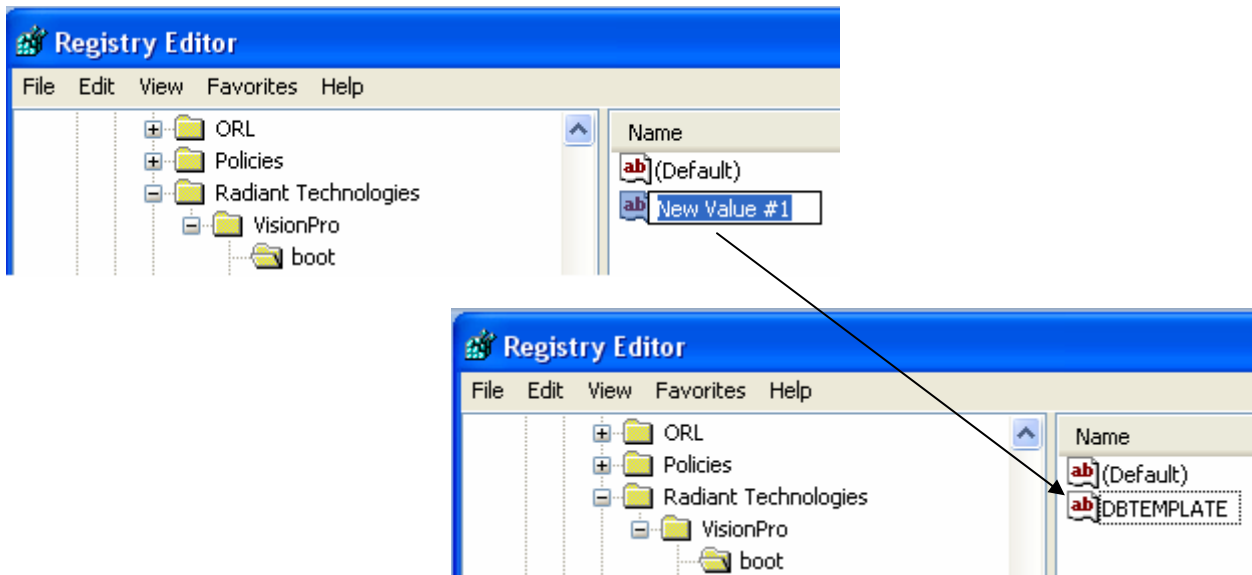
**Figure 4 – Add the HKEY\_CURRENT\_USER->Software->Radiant Technologies->boot and Settings Keys.**

The three entries that are critical to Vision are entered into these keys. If the keys already exist, then you may find that there are already entries – perhaps many of them – in the Settings key. Whether these are present or not is not of concern to this process. Select the HKEY\_CURRENT\_USER->Software->Radiant Technologies->boot key. In the right-hand window, right-click and select New->String Value.



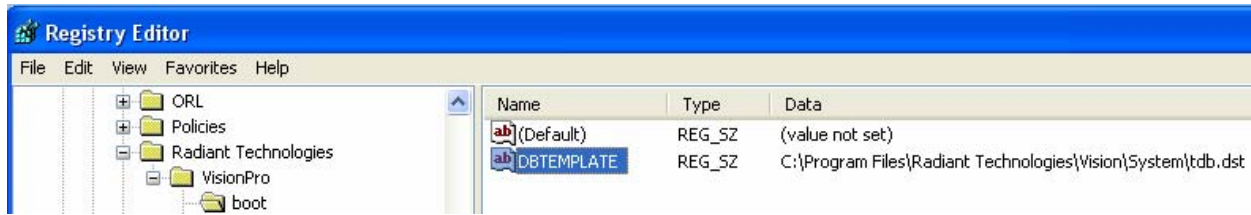
**Figure 5 – Add a New String Value to the HKEY\_CURRENT\_USER->Software->Radiant Technologies->boot Key.**

Rename the value New Value #1 -> DBTEMPLATE



**Figure 6 – Name the String Value “DBTEMPLATE”.**

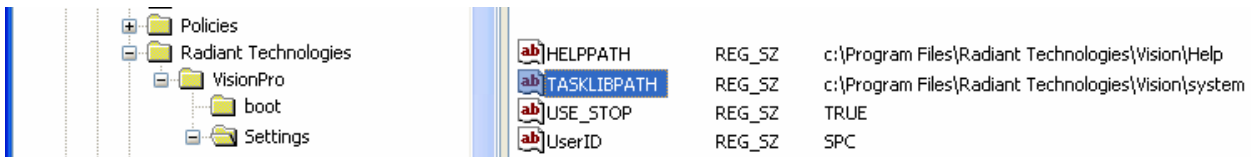
Double-click the DBTEMPLATE entry. In the Edit String dialog that appears, set the Value data: control to “C:\Program Files\Radiant Technologies\Vision\System\tdb.dst” and click OK. The value in the DBTEMPLATE entry will be updated to show the value.



**Figure 7 – “DBTEMPLATE” with the Proper Value Assigned.**

Now, select the KEY\_CURRENT\_USER->Software->Radiant Technologies->Settings key. Using the steps above, add two String Values named HELPPATH and TASKLIBPATH. Set the data in these string values to:

- HELPPATH = c:\Program Files\Radiant Technologies\Vision\Help
- TASKLIBPATH = c:\Program Files\Radiant Technologies\Vision\system



**Figure 8 – “Settings” Key with String Values. Some Extra String Values that May or May Not Exist are Also Shown.**

Close the registry. Vision should now be ready to run. However, if Vision was originally installed under Version 4.1.2 or older (including Version 3.2.0) and the current installation is Version 4.1.3 or later, Vision will look into the wrong place for your DataSet registry and, although Vision will run properly, your DataSet Explorer will have no registered DataSets. You should first start Vision and ensure that it runs correctly. If you receive a message on startup that a new DataBase Explorer has been created, then you should stop Vision, locate the file C:\xploreddb.cpu and copy the file to C:\Program Files\Radiant Technologies\Vision\xploreddb.cpu, then restart Vision. The DataBase Explorer window should show all registered DataSets at that point.

These steps should get any host that runs Vision under multiple logins properly updated to fully execute Vision under any login. In some cases in which systems have extraordinary network security, these steps have proven insufficient. In most of those cases, close work with the on-site network administrator has resolved the issue. In a few cases, the issue has only been resolved by installing Vision onto a new dedicated host that is not networked.

Good luck in your Vision installation. Please let me know immediately if you have any questions, comments or difficulties.

Good luck in your research.

Sincerely,

Scott P. Chapman  
Computer Engineer